



Instructional Design and Development - II

Classroom Instructional Design Model – Bates Model

Designed by: Prabesh Devkota, Rachita Kapoor



INTRODUCTION



- ▶ Bates model is also known as the front-end system design model.
- ▶ Bates model is focused on developing open and distance learning courses.
- ▶ The model focuses on learners working remotely and on their own schedule.
- ▶ Bates model focuses on interaction and flexibility in distance learning courses.



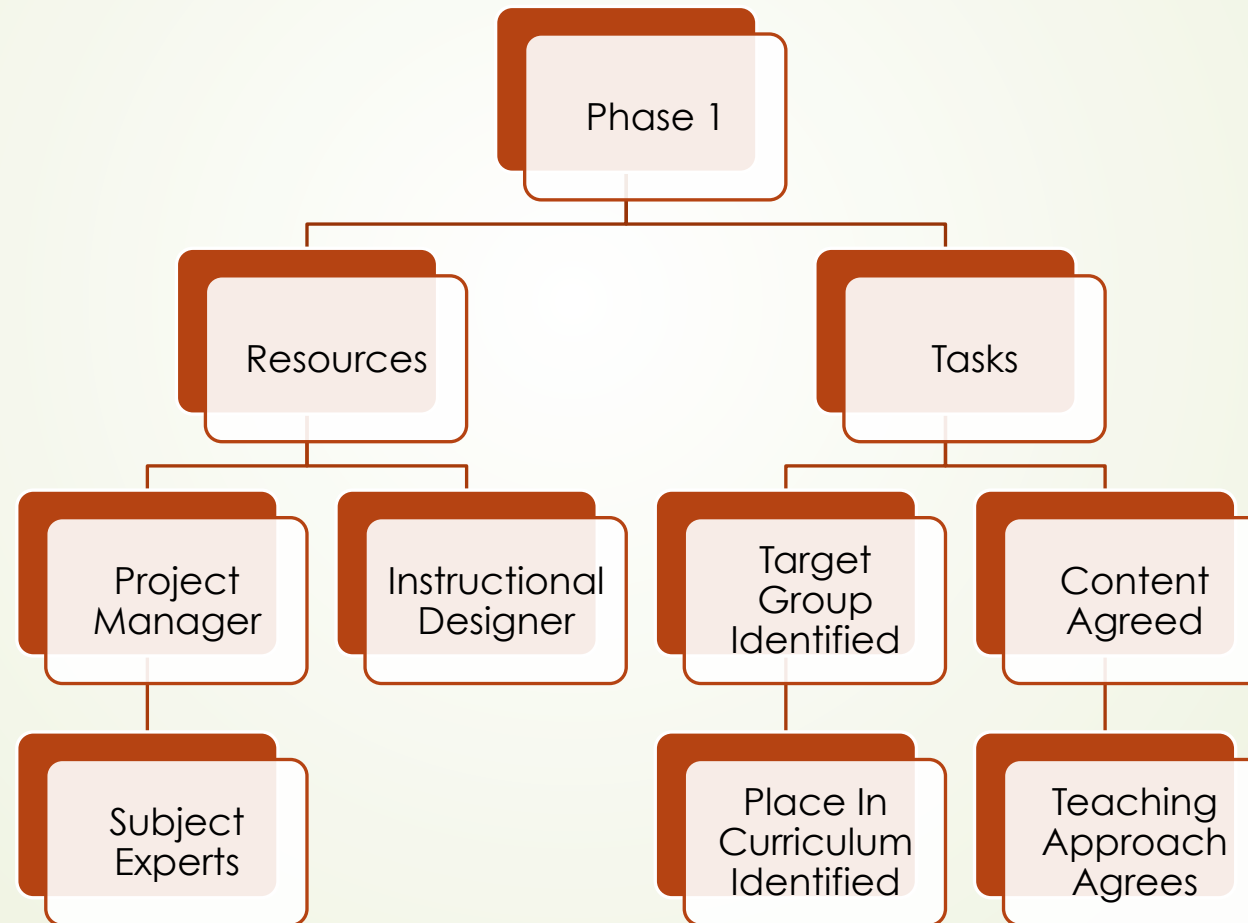
PHASES OF BATES MODEL

The Bates model is divided into four phases:

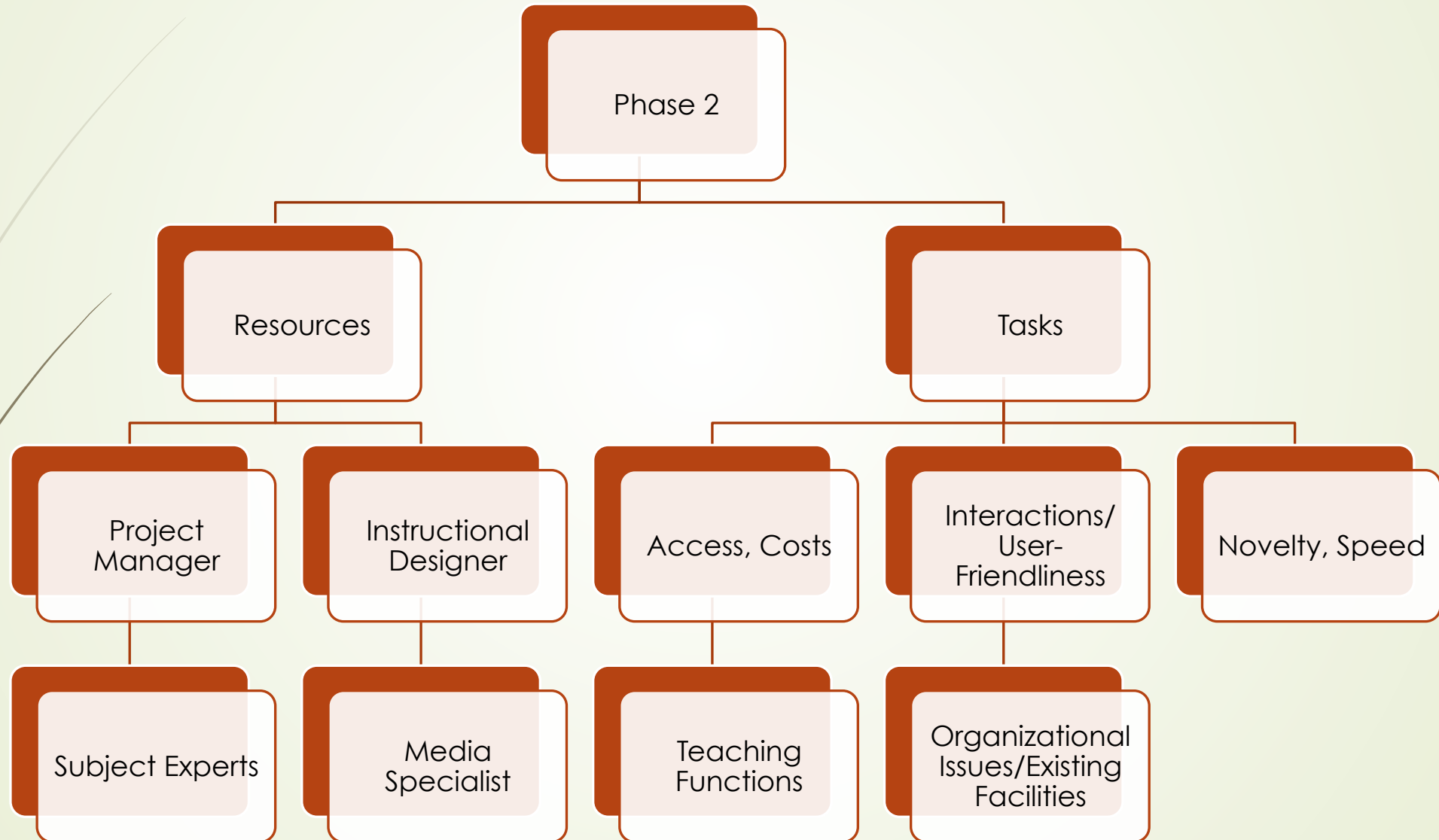
- Course Outline Development
- Selection of Media
- Selection/Production of Materials
- Course Delivery

Each phase identifies the required team roles and resources working on it and the actions and tasks that needs to be completed.

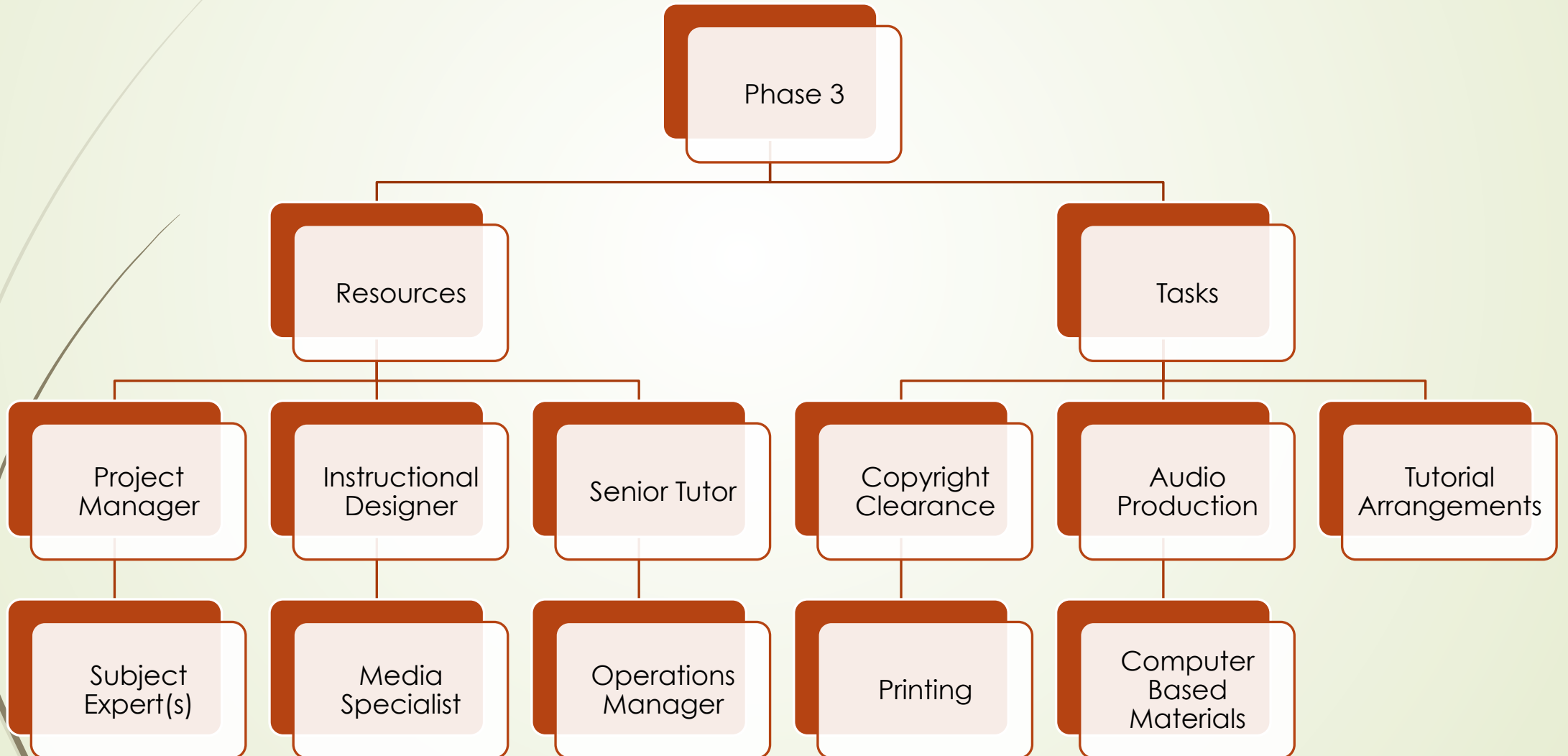
PHASE 1: COURSE OUTLINE DEVELOPMENT



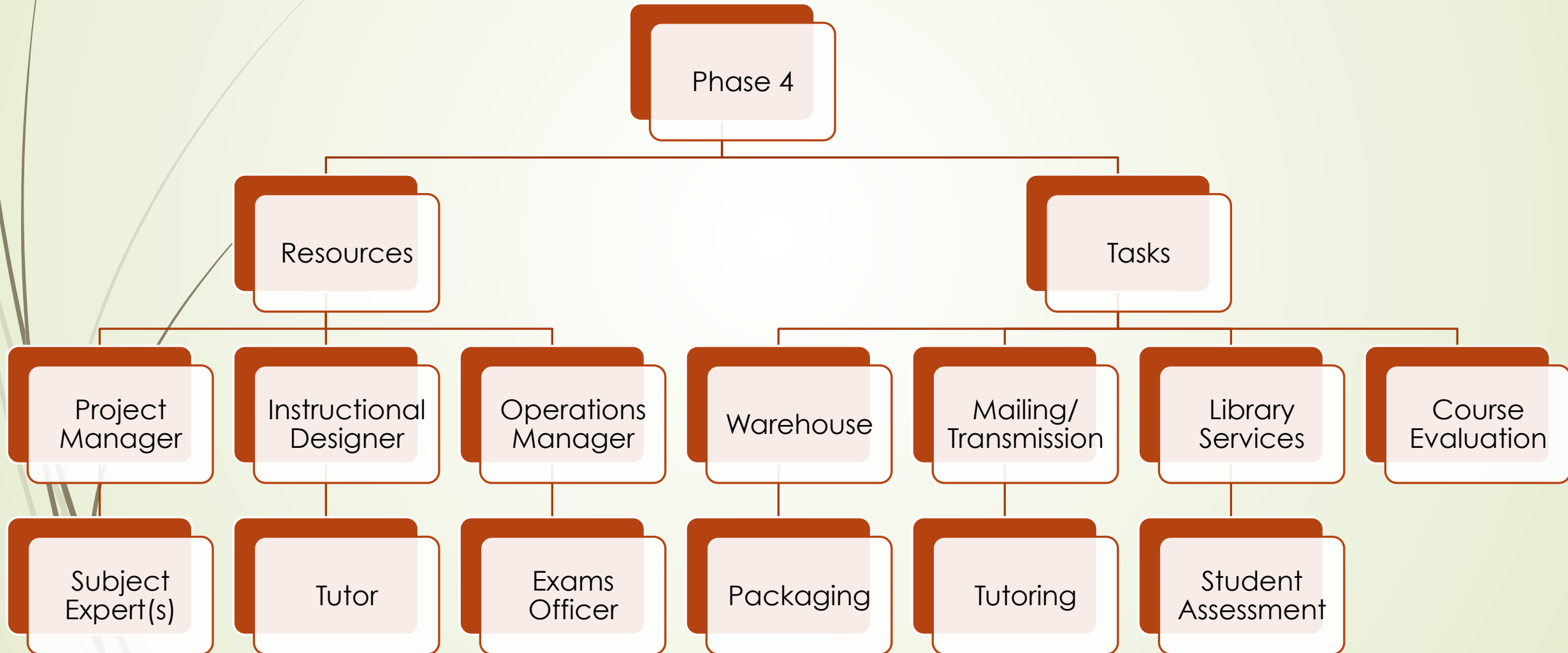
PHASE 2: SELECTION OF MEDIA



PHASE 3: SELECTION/PRODUCTION OF MATERIALS



PHASE 4: COURSE DELIVERY





TAKE AWAY

- ▶ The model relies heavily on theories of instructional design.
- ▶ The model focuses on building learner activities.
- ▶ The model believes in providing clear and concise feedback
- ▶ The model emphasizes on carefully structuring content

Great emphasis is placed on making the best match of learning requirements to appropriate technologies and then carefully testing the resulting instructions.